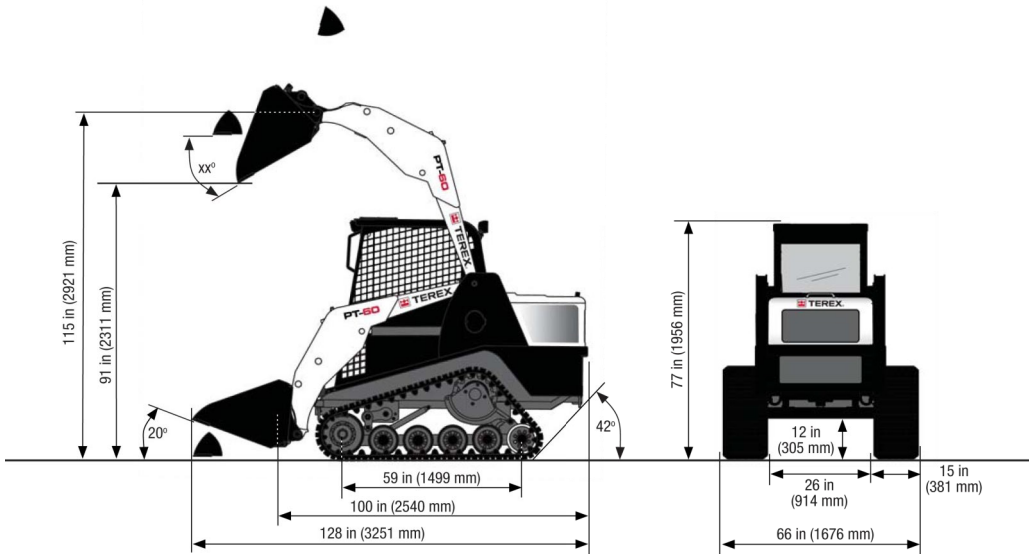


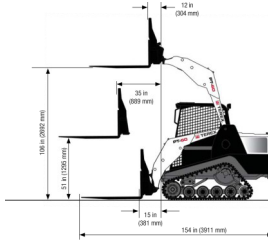
# TEREX PT60



## Dimensions:



## PT60 Compact Track Loader



Mid-sized compact track loader with low ground pressure and excellent traction for working on soft, wet or sensitive surfaces. Two-speed hydrostatic drive system offers fast travel speed and high torque work speed. Easy operation with pilot-operated joystick controls and comfortable operator station. Standard auxiliary hydraulics and hydraulic quick coupler attach easily to a wide range of industry-standard attachments.

## Specifications

| Operating Specifications (standard equipment) |                     |
|---|---------------------|
| Operating weight                              | 6,350 lb (2880 kg)  |
| Shipping weight                               | 5,600 lb (2450 kg)  |
| Ground pressure @ operating weight            | 3.6 psi (24.7 kPa)  |
| Tipping load                                  | 3,800 lb (1724 kg)  |
| Operating capacity, 50% tipping load          | 1,900 lb (862 kg)   |
| Operating capacity, 35% tipping load          | 1,330 lb (603 kg)   |
| Travel speed, low range                       | 0-6 mph (10 kph)    |
| Travel speed, high range                      | 0-11 mph (17.7 kph) |

## Engine

|                               |   |
|-------------------------------|---|
| Type                          | Diesel, 4-cylinder, turbocharged                          |
| Model                         | Perkins 404D-22T  |
| Displacement                  | 134 in <sup>3</sup> (2.2 L)                               |
| Gross power rating @ 2800 rpm | 60 hp (44.7 kW)   |
| Torque, peak                  | 140 ft·lb (190 Nm)  |
| Cooling system                | Engine-driven fan and coolant/anti-freeze-filled radiator |
| Engine block heater           | Standard, AC plug-in type                                 |
| Intake air cleaner            | Dual stage  |
| Emission controls             | Meets all U.S. EPA Tier 3 standards                       |

## Undercarriage

|   |  |
|---|--|
| Track type                                    | <ul style="list-style-type: none"> <li>- General purpose track constructed of rubber compound with embedded copolymer cords and all-purpose treads.</li> <li>- Single row of track drive lugs molded in.</li> <li>- Turf Track with smooth tread available as an option.</li> <li>- Extreme Terrain Track with aggressive treads and 16.5 in (419 mm) width available as an option.</li> </ul> |
| Track width (general purpose and Turf Tracks) | 15 in (381 mm)   |
| Length of track on ground                     | 59 in (1499 mm)  |
| Ground contact area                           | 1,770 in <sup>2</sup> (1.14 m <sup>2</sup> )   |
| Drive system                                  | Two hydrostatic direct drive sprockets controlled by a single joystick.  |
| Track drive sprocket                          | Elevated with low friction, replaceable sprocket rollers.  |
| Undercarriage suspension                      | Two independent torsion axles per undercarriage.   |
| Roller wheels                                 | 10 high-density polyurethane and rubber wheels plus 2 steel/polyurethane wheels (rear) per track. Wheels include sealed bearings.  |
| Roller wheel diameters                        | Front wheels - 14 in (365 mm); other wheels - 10 in (254 mm)   |

### Auxiliary Hydraulic System

|                       |  |
|-----------------------|--|
| Pump capacity         | 17.4 gpm (65.9 lpm)  |
| System pressure, max. | 3,000 psi (20 670 kPa)   |
| Controls              | Intermittent via joystick button or continuous via console switch,<br>mode selectable via dash-mounted switch. |
| Couplers              | Push-to-connect quick couplers mounted on loader arms.<br>Pressure relief valve mounted to coupler block.      |
| Cooling system        | High efficiency oil cooler beside engine radiator, not stacked.  |

**SOUTHERN**  
TOOL + EQUIPMENT



## Electrical System

|                 |   |
|-----------------|---|
| Nominal charge  | 12 V  |
| Battery         | 770 CCA   |
| Charging system | 65 amp alternator                               |
| Outlets         | 1-12 V port inside operator station             |
| Wiring          | Pre-wired for all factory-available accessories |

### Operator Station

|                          |  |
|--------------------------|--|
| Seat                     | Adjustable contour vinyl seat with built-in operator presence switch, lap bar and 2-in (51 mm) wide seat belt  |
| Loader control           | Right-hand pilot hydraulic joystick controls loader lift/lower and tilt, plus intermittent control of aux. hydraulic.  |
| Drive control            | Left-hand pilot hydraulic joystick controls machine speed and direction.   |
| Engine speed             | Hand throttle lever and foot pedal.  |
| Indicators/gauges        | <ul style="list-style-type: none"> <li>- Engine oil low-pressure light</li> <li>- Hydraulic oil high-temperature light</li> <li>- Low battery voltage light</li> <li>- Coolant temperature gauge <ul style="list-style-type: none"> <li>- Tachometer</li> <li>- Fuel gauge</li> <li>- Hour meter</li> </ul> </li> </ul>  |
| ROPS                     | Meets SAE J1040 MAY94, ISO 3471:1994   |
| FOPS                     | Meets SAE J1043 SEPT87, ISO 3449:1992  |
| Illumination             | <ul style="list-style-type: none"> <li>4 - Fixed forward-facing halogen lights</li> <li>1 - Adjustable rear-facing halogen light</li> <li>1 - Interior light</li> </ul>  |
| Convenience              | 12 V power port  |
| Operator station options | <ul style="list-style-type: none"> <li>- Back-up alarm</li> <li>- Beacon, rotating</li> <li>- Cold-weather cab with wiper and heater</li> <li>- All-weather cab with wiper, A/C and heater <ul style="list-style-type: none"> <li>- Front door, (glass or polycarbonate)</li> <li>- Horn</li> </ul> </li> <li>- Seat belt, 3-inch (76 mm) wide <ul style="list-style-type: none"> <li>- Sound insulation package</li> <li>- Engine tachometer</li> <li>- Window, rear</li> </ul> </li> <li>- Windows, side, sliding</li> </ul> |

### Service Refill Capacities

|                              |                      |
|------------------------------|----------------------|
| Fuel tank                    | 15 US gal (56.8 L)   |
| Hydraulic tank               | 8 US gal (30.3 L)    |
| Engine coolant/antifreeze    | 2 US gal (7.5 L)     |
| Engine oil, including filter | 11.2 quarts (10.6 L) |

